

# SYSDYNET Toolbox for Identification of Dynamic Networks

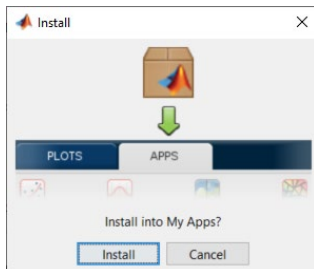
## Quick Start Guide

### Prerequisites

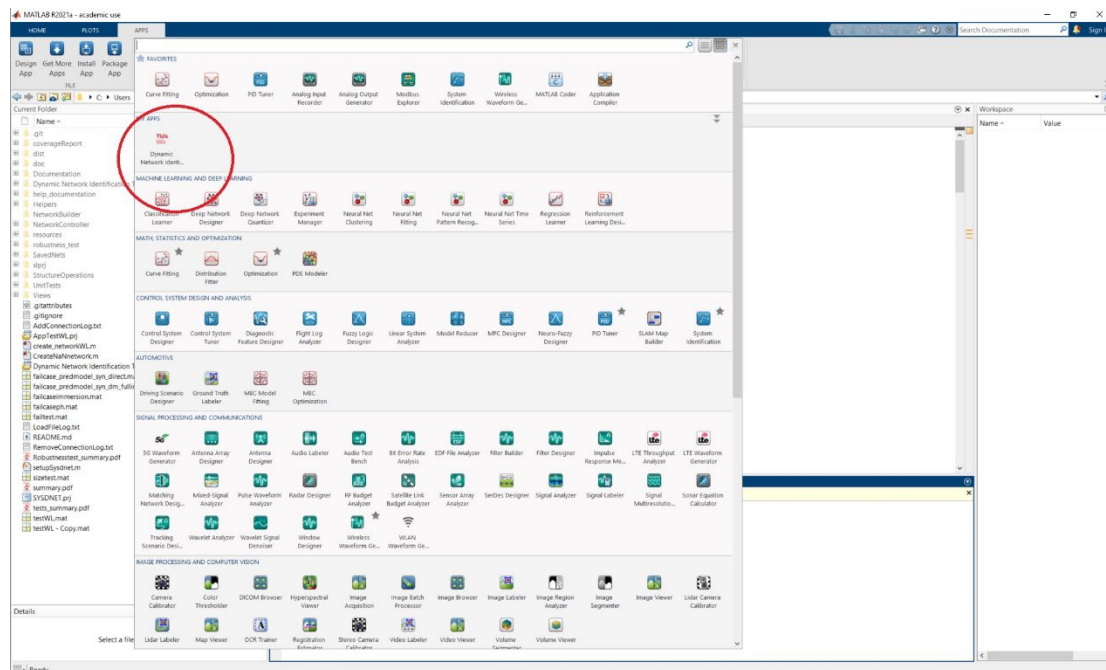
- Take note of the license file.
- MATLAB 2021a or higher (tested on MATLAB R2021a & R2023b) with
  - Control Systems Toolbox
- (Optional) To be able to run identification algorithms (nwidfullSLS, nwidPEM and nwidsingleMultiStep) at the command line:
  - System Identification Toolbox
  - CVX ([Download CVX | CVX Research, Inc.](#)), only required for nwidfullSLS

### Installation

- Unzip the file “Dynamic Network Identification Toolbox 0\_3\_1.zip”.
- Double click the “Dynamic Network Identification Toolbox.mlappinstall”.

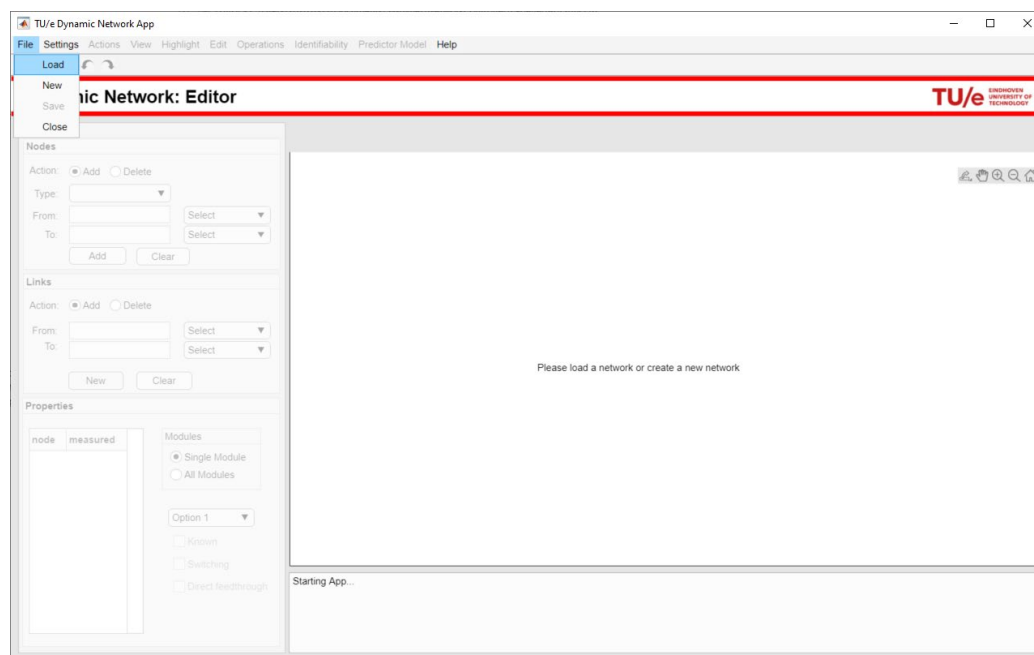


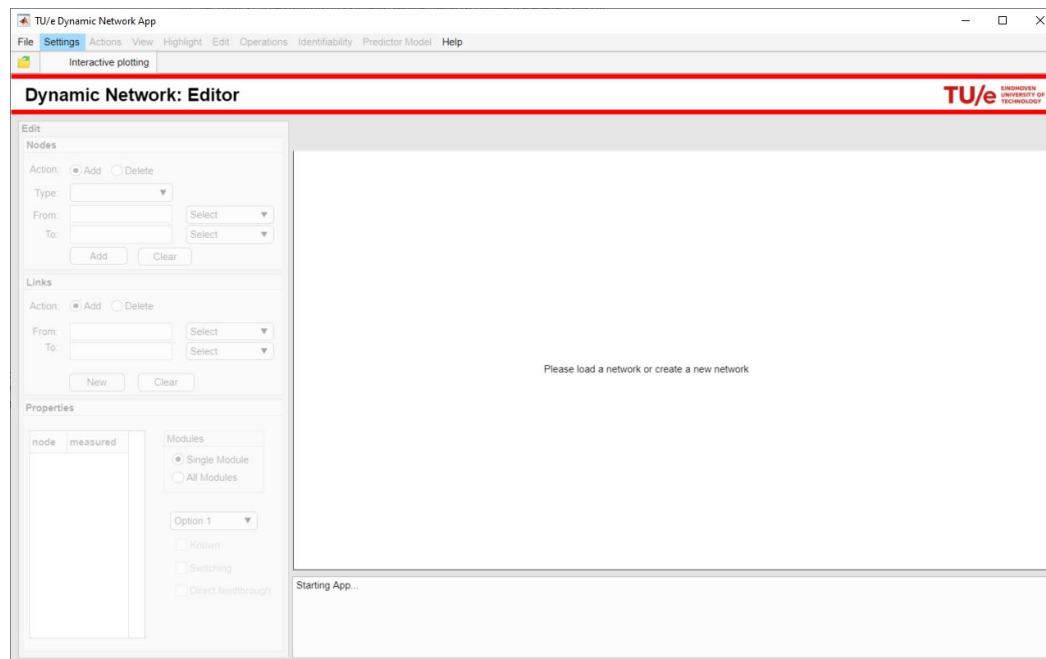
- There is an icon for the Toolbox in the App-tab.



## Run the Toolbox

- Click on the Toolbox icon in the App-tab
- Load a network. There are three examples in the “Examples” directory in the zip-file.





- Use the “Help” tab in the App for further information.
- Make sure the App is open in order to use the functions and classes listed in the reference ([MATLAB functions for structural operations | SYSDYNET \(tue.nl\)](https://www.tue.nl/sydyne/matlab)) at the command line. Use `help <command>` to get detailed documentation on these functions/classes.